



The Kingsbury

4 bedroom home

With lots of living space and plenty of possibilities, the Kingsbury is perfect for busy families. At the heart of this generous four bedroom home, there's a comfortable lounge and open plan dining kitchen with sunny breakfast area, both rooms have French doors, so you can step straight out onto the garden, for relaxed weekends and get togethers. There's also a separate dining room, made for family dinners and entertaining, as well as a dedicated study, ideal for working from home. Like to use them for something different? Whether you need an extra family room, craft room or home gym, they're bright, flexible spaces you can make your own.

To the first floor, you'll find a principal bedroom with built-in wardrobes and en-suite. There's also three further bedrooms, all with built-in wardrobes and a family bathroom with bath and separate shower cubicle.



Features

- Open plan kitchen with breakfast area & French doors to garden
- Inviting lounge with French doors
- Separate dining room & study
- Useful utility room
- En suite to principal bedroom
- Built-in wardrobes to all bedrooms
- High quality Smeg kitchen appliances
- Hive smart heating system
- Fully turfed rear garden
- Double garage

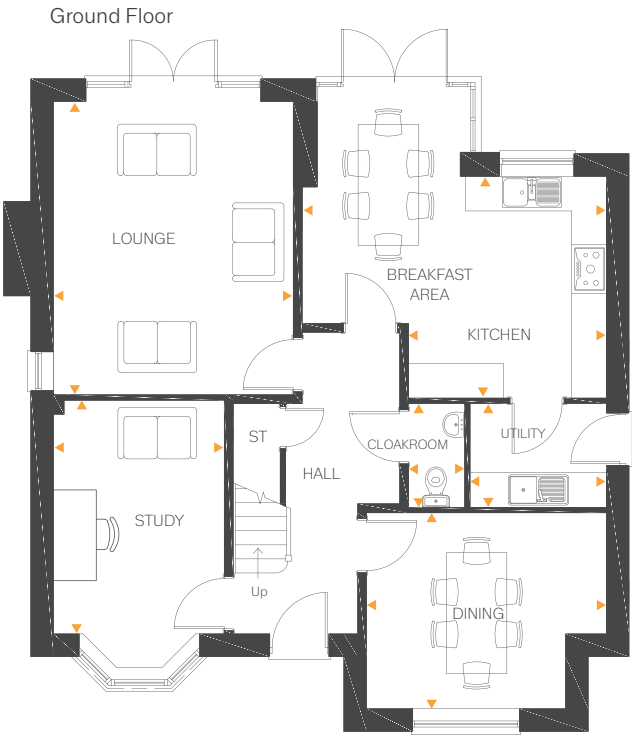
Room Dimensions

Ground Floor

Lounge	15'10" x 12'11"	4.84m x 3.96m
Study	12'8" x 9'3"	3.87m x 2.82m
Dining Room	12'11" x 10'7"	3.96m x 3.24m
Kitchen/ Breakfast Area	16'5" (max) x 12'0" 10'8" (min)	5.02m (max) x 3.66m 3.26m (min)
Utility	7'4" x 5'6"	2.25m x 1.70m
Cloakroom	5'6" x 3'0"	1.70m x 0.92m

First Floor

Bedroom 1	13'0" x 12'6"	3.97m x 3.81m
En-suite	9'4" x 3'11"	2.87m x 1.20m
Bedroom 2	14'2" x 13'0"	4.32m x 3.97m
Bedroom 3	12'0" x 8'11"	3.67m x 2.74m
Bedroom 4	11'9" x 9'4"	3.60m x 2.87m
Bathroom	8'5" x 7'3"	2.57m x 2.23m



All drawings, plans, and images are for illustrative purposes only. Room measurements are approximate. Finishes and layouts may vary and, during the construction process, plans might be subject to change. For more information, speak to your sales consultant.