

THE SEVERN

FOUR BEDROOM HOME



The Severn is a spacious family home with bright living spaces you'll love. Step straight through the welcoming hallway and you'll find a generous open plan kitchen, dining and family area with a beautifully glazed pod that lets light pour in and French doors leading out into the garden, it's made for entertaining and spending time together. There's a relaxing living room with views over the front garden and a separate study that makes the perfect hideaway when you need to work from home. There's also a useful utility room and cloakroom.

To the first floor, the principal bedroom has its own en-suite and built-in wardrobe. Three further bedrooms share a modern family bathroom with bath and separate shower cubicle.

Outside there is a turfed garden, driveway, EV charger and garage.

THE SEVERN

FOUR BEDROOM HOME



Inviting lounge



Open plan dining kitchen
with family area & French
doors to garden



Useful study/extra family room



Downstairs cloakroom



Principal bedroom with
built-in wardrobe & en-suite



High quality kitchen appliances



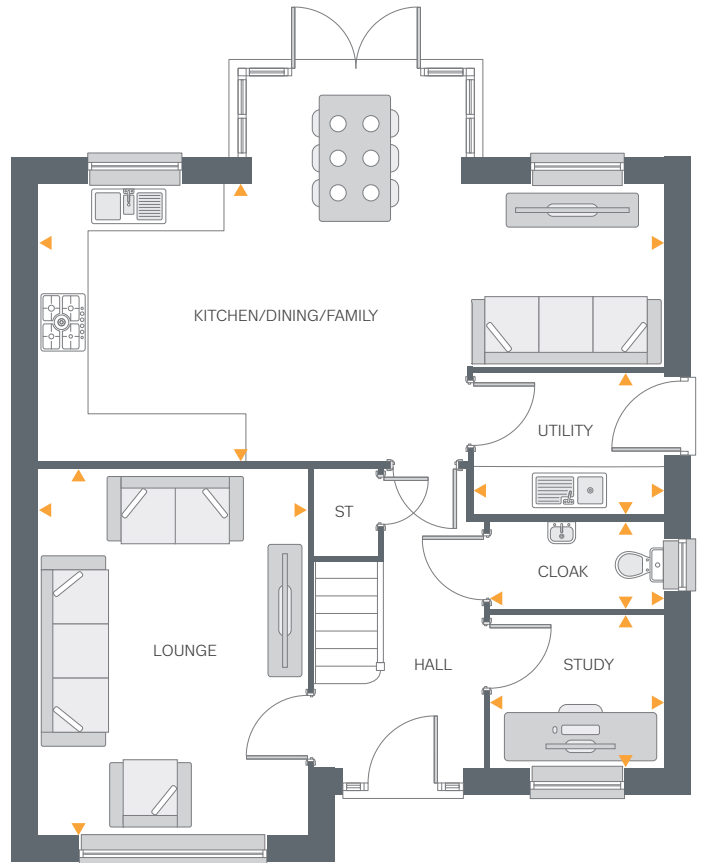
Hive smart heating system



Fully turfed rear garden



EV charger & garage



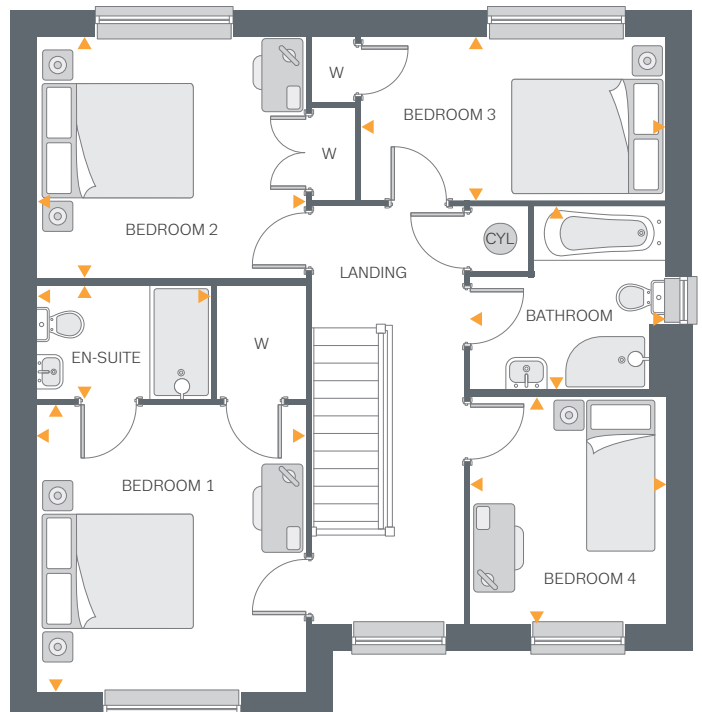
Ground Floor

Ground Floor

Lounge	15'8" x 11'6"	4.80m x 3.51m
Kitchen/ Dining/Family	27'1" x 11'10"	8.28m x 3.62m
Utility	8'1" x 6'0"	2.48m x 1.83m
Study	7'5" x 6'6"	2.28m x 1.99m
Cloakroom	7'5" x 3'7"	2.28m x 1.11m

First Floor

Bedroom 1	12'3" x 11'6"	3.75m x 3.51m
En-suite	7'4" x 4'11"	2.26m x 1.50m
Bedroom 2	11'6" x 10'3"	3.51m x 3.13m
Bedroom 3	13'0" x 6'11"	3.98m x 2.11m
Bedroom 4	9'8" x 8'4"	2.95m x 2.54m
Bathroom	8'4" x 7'11"	2.54m x 2.42m



First Floor

All drawings, plans, and images are for illustrative purposes only. Room measurements are approximate. Finishes and layouts may vary and, during the construction process, plans might be subject to change. For more information, speak to your Sales Consultant.