

THE DENWICK

FOUR BEDROOM HOME



Behind the Denwick's traditional exterior, you'll find a home filled with modern living space. An inviting entrance hall leads to a generous lounge, as well as a light, bright kitchen with family dining area and French doors to the garden. There's also a separate utility room and a useful study, giving you the perfect hideaway when you're working from home.

The first floor landing leads to four bedrooms, two of which come with built-in wardrobes, while the principal bedroom also has its own en-suite. The contemporary fitted family bathroom includes a bath and separate shower cubicle.

Outside there is a turfed garden, driveway, EV charger and garage.

THE DENWICK

FOUR BEDROOM HOME



Inviting lounge



Open plan dining kitchen with French doors to garden



Useful study/extra family room



Downstairs cloakroom



Principal bedroom with built-in wardrobes & en-suite



High quality kitchen appliances



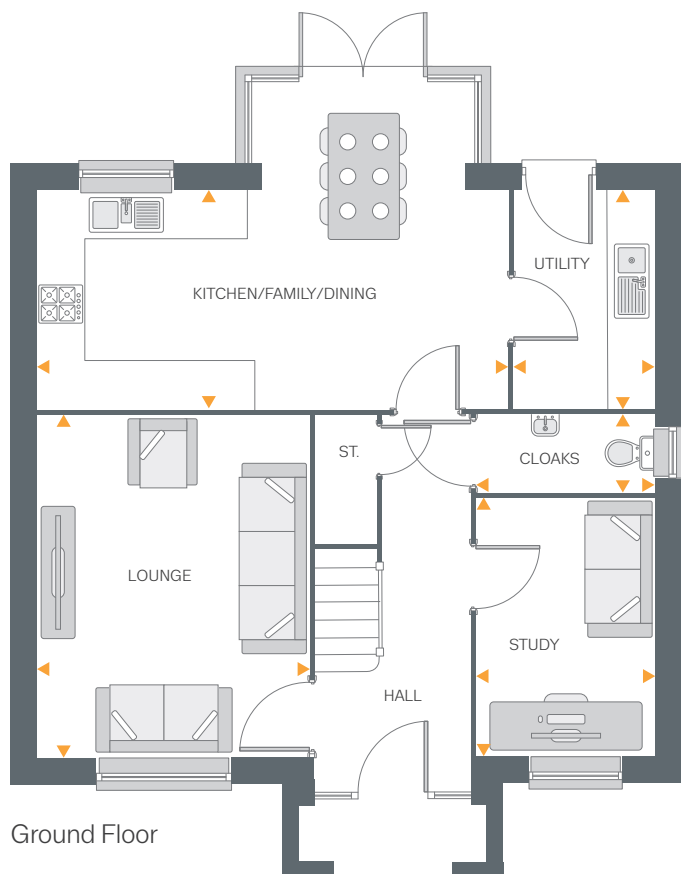
Hive smart heating system



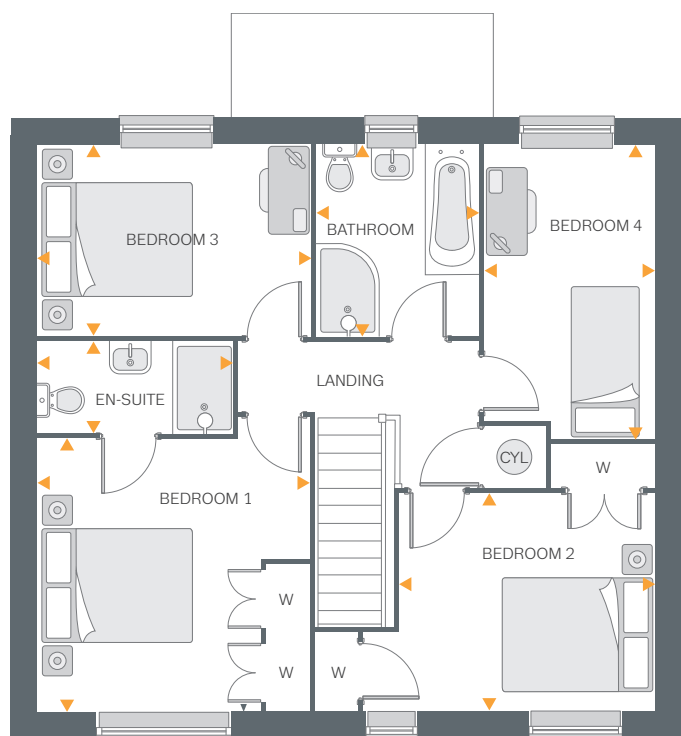
Fully turfed rear garden



EV charger & garage



Ground Floor



First Floor

Ground Floor

Lounge	14'7" x 11'8"	4.46m x 3.57m
Kitchen Family/Dining	20'4" x 9'3"	6.20m x 2.83m
Utility	9'3" x 6'0"	2.83m x 1.82m
Study	11'1" x 7'7"	3.40m x 2.33m
Cloakroom	7'7" x 3'2"	2.33m x 0.97m

First Floor

Bedroom 1	11'9" x 11'8"	3.58m x 3.57m
Ensuite	8'4" x 3'11"	2.55m x 1.20m
Bedroom 2	10'11" x 9'4"	3.34m x 2.86m
Bedroom 3	11'9" x 8'1"	3.59m x 2.47m
Bedroom 4	12'7" x 7'3"	3.84m x 2.21m
Bathroom	8'1" x 6'11"	2.47m x 2.12m

All drawings, plans, and images are for illustrative purposes only. Room measurements are approximate. Finishes and layouts may vary and, during the construction process, plans might be subject to change. For more information, speak to your Sales Consultant.