

THE BLYTH

FOUR BEDROOM HOME



The Blyth is a welcoming family home. Step inside and you'll find a bright ground floor comprising an open plan dining kitchen with French doors, perfect for stepping outside on relaxed summer weekends. There's also a spacious lounge with dual aspect windows, useful utility room and cloakroom.

Upstairs there's a luxurious principal bedroom with built-in wardrobes and en-suite, as well as three further bedrooms sharing a modern family bathroom.

Outside there is a turfed garden, driveway, EV charger and garage.

THE BLYTH

FOUR BEDROOM HOME



21ft dual aspect lounge



Open plan dining kitchen with French doors to garden



Downstairs cloakroom



Principal bedroom with built-in wardrobe & en-suite



High quality kitchen appliances



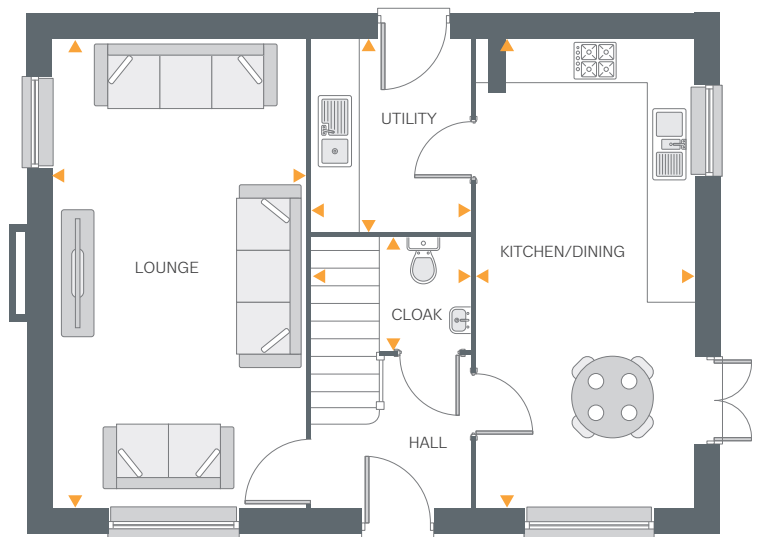
Hive smart heating system



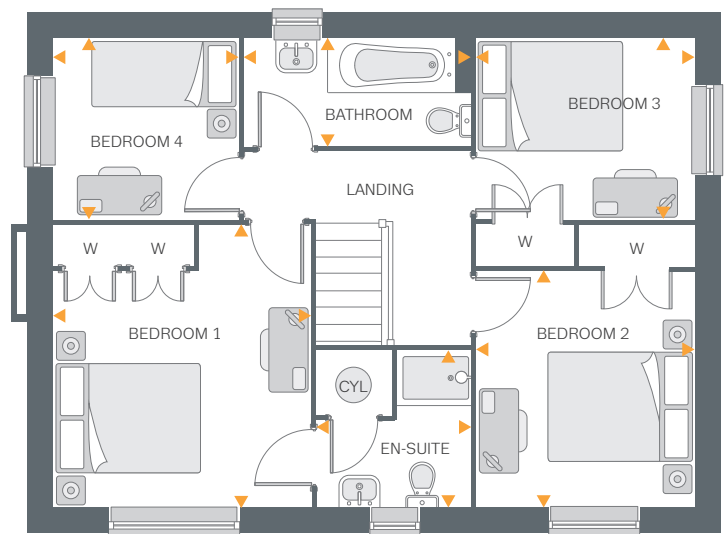
Fully turfed rear garden



Garage & EV charger



Ground Floor



First Floor

Ground Floor

Lounge	21'3" x 11'4"	6.48m x 3.47m
Kitchen/Dining	21'3" x 9'7"	6.48m x 2.94m
Utility	8'7" x 7'0"	2.62m x 2.14m
Cloakroom	6'9" x 4'11"	2.08m x 1.51m

First Floor

Bedroom 1	12'8" x 11'6"	3.87m x 3.51m
En-suite	7'0" x 6'10"	2.15m x 2.10m
Bedroom 2	10'7" x 9'9"	3.23m x 2.98m
Bedroom 3	9'9" x 8'0"	2.98m x 2.46m
Bedroom 4	8'2" x 8'0"	2.51m x 2.46m
Bathroom	10'2" x 4'9"	3.10m x 1.46m