

# THE DEE

## THREE BEDROOM HOME



A covered porch and hallway welcome you into this attractive home where you have access to a spacious lounge with dual aspect windows, filling the space with light and an open plan dining kitchen which benefits from having French doors that open out onto the garden. A separate utility room provides extra storage and a cloakroom completes the ground floor.

Upstairs you'll find a luxurious principal bedroom with built-in wardrobe and en-suite and two further bedrooms sharing a modern family bathroom.

Outside there is a turfed garden, driveway, and EV charger.

# THE DEE

## THREE BEDROOM HOME



Inviting lounge



Open plan dining kitchen with French doors to garden



Downstairs cloakroom



Principal bedroom with built-in wardrobe & en-suite



High quality kitchen appliances



Hive smart heating system



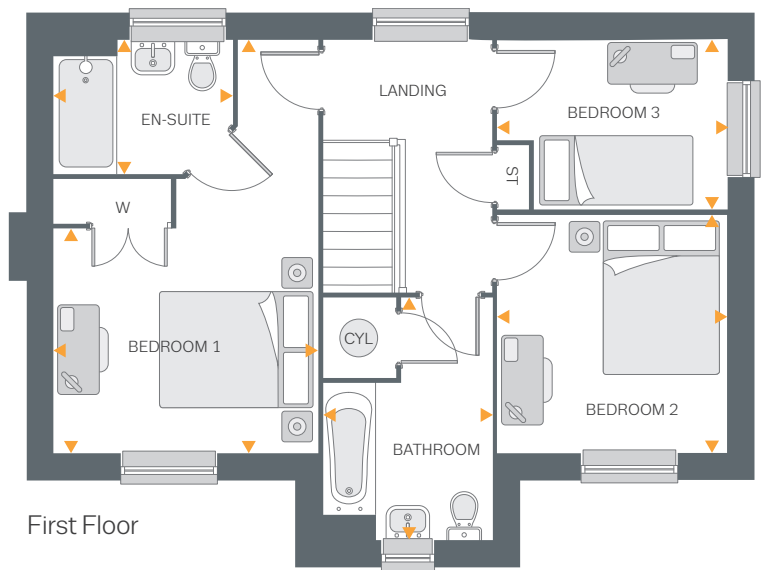
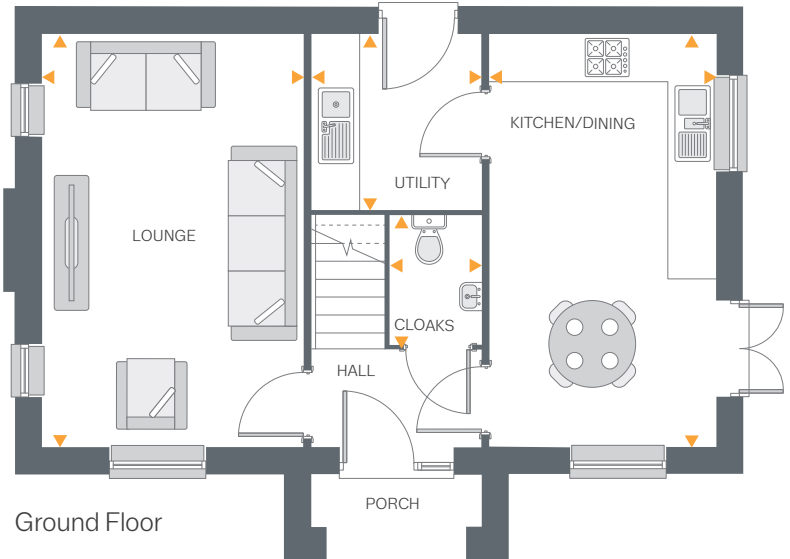
Fully turfed rear garden



Driveway



EV charger



### Ground Floor

Lounge	17'5" x 10'11"	5.31m x 3.33m
Kitchen/Dining	17'5" x 9'5"	5.31m x 2.89m
Utility	7'4" x 7'0"	2.25m x 2.15m
Cloakroom	5'4" x 3'9"	1.65m x 1.15m

### First Floor

Bedroom 1	17'5" (max) x 11'1" 9'5" (min)	5.31m (max) x 3.39m 2.87m (min)
En-suite	7'6" x 5'6"	2.28m x 1.70m
Bedroom 2	10'0" x 9'7"	3.05m x 2.94m
Bedroom 3	9'7" x 7'1"	2.94m x 2.16m
Bathroom	10'2" x 7'1"	3.10m x 2.16m

All drawings, plans, and images are for illustrative purposes only. Room measurements are approximate. Finishes and layouts may vary and, during the construction process, plans might be subject to change. For more information, speak to your Sales Consultant.