

THE WYE

THREE BEDROOM HOME



Step inside the Wye and you'll find an inviting lounge and open plan dining kitchen with French doors to the turfed rear garden, it's a light, bright, comfortable space, whether you're cooking for the family or hosting friends. A useful cloakroom finishes off the ground floor.

Upstairs feels just as light and bright. There is a spacious principal bedroom with en-suite and built-in wardrobes, two further bedrooms and a modern family bathroom.

Outside there is a fully turfed garden and off road parking.

THE WYE

THREE BEDROOM HOME



Inviting lounge



Open plan dining kitchen with French doors to garden



Downstairs cloakroom



Principal bedroom with en-suite & built-in wardrobes



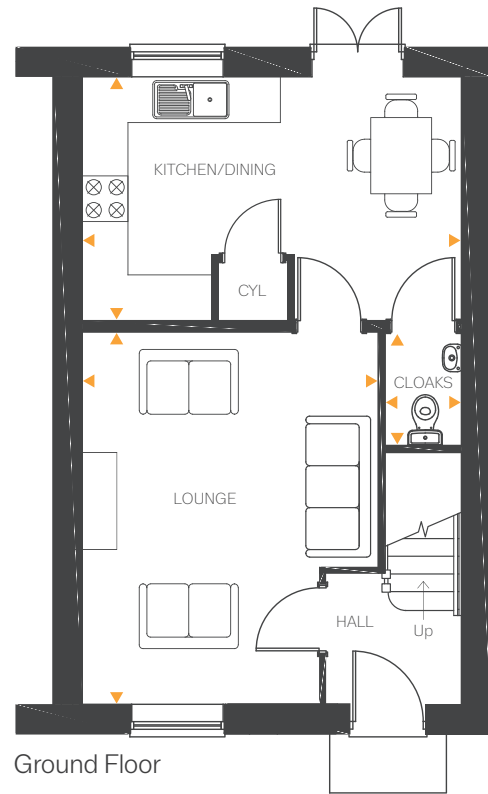
High quality kitchen appliances



Hive smart heating system



Fully turfed rear garden

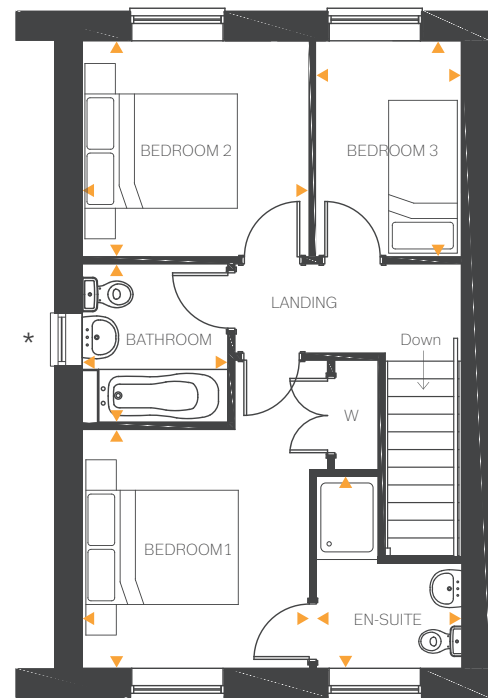


Ground Floor

| | | |
|----------------|----------------|---------------|
| Lounge | 16'0" x 12'11" | 4.88m x 3.95m |
| Kitchen/Dining | 16'3" x 10'5" | 4.97m x 3.20m |
| Cloakroom | 5'3" x 3'0" | 1.61m x 0.93m |

First Floor

| | | |
|-----------|---------------|---------------|
| Bedroom 1 | 10'3" x 10'0" | 3.13m x 3.05m |
| En-suite | 8'6" x 5'11" | 2.61m x 1.82m |
| Bedroom 2 | 9'8" x 9'3" | 2.97m x 2.83m |
| Bedroom 3 | 9'3" x 6'3" | 2.83m x 1.91m |
| Bathroom | 6'9" x 6'3" | 2.07m x 1.91m |



First Floor

*Window included on selected plots.