

The Rother

2-bedroom home

As you step through the front door of The Rother and enter the hall, to your left you'll find a generously sized lounge that opens into a modern kitchen and dining area with cloakroom. Upstairs both the bedrooms feature luxurious built-in wardrobes, and a bathroom with over bath shower is shared between the two. And with bedrooms at the front and back of the house, you can decide whether yours looks out over the neighbourhood or the beautifully landscaped garden.



Features

- Open plan kitchen and dining area looking out onto rear garden
- Separate lounge looking out on front garden
- Cloakroom and family bathroom
- Landscaped garden
- Stainless steel integrated single oven, hob and extractor fan
- Built-in wardrobes in both bedrooms

Room Dimensions

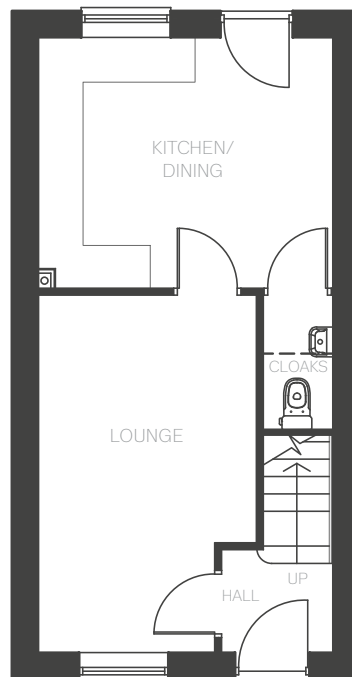
Ground Floor

LOUNGE	4757 x 2892(max) mm 2333(min) mm	15'7" x 9'5" 7'7"
KITCHEN/DINING	3900 x 3330 mm	12'9" x 10'11"
CLOAKROOM	1787 x 905 mm	5'10" x 2'11"

First Floor

BEDROOM 1	3900(max) x 2885(max) mm	12'9" x 9'5"
BEDROOM 2	2892 x 2809 mm	9'5" x 9'2"
BATHROOM	2290 x 1774 mm	7'6" x 5'9"

Ground Floor



First Floor

