

The Seaton

4-bedroom detached home

The Seaton is great for busy families, with lots of living space on the ground floor; at the front of the house is a study and dining room, and at the back a separate lounge and a kitchen with breakfast area. In the hall at the centre of the house are the stairs up to the first floor, which has a family bathroom and four bedrooms, including a master bedroom with an en-suite shower room and two built-in wardrobes.



Features

- Open plan kitchen with breakfast area looking out on rear garden
- Spacious 15ft lounge and separate dining room and study
- Cloakroom, family bathroom with bathtub, and master en-suite shower
- Landscaped garden reached through French doors
- High quality Smeg kitchen appliances
- Stainless steel integrated oven, 5 ring hob and chimney hood extractor fan
- Built-in wardrobes in all bedrooms
- Double garage

Room Dimensions

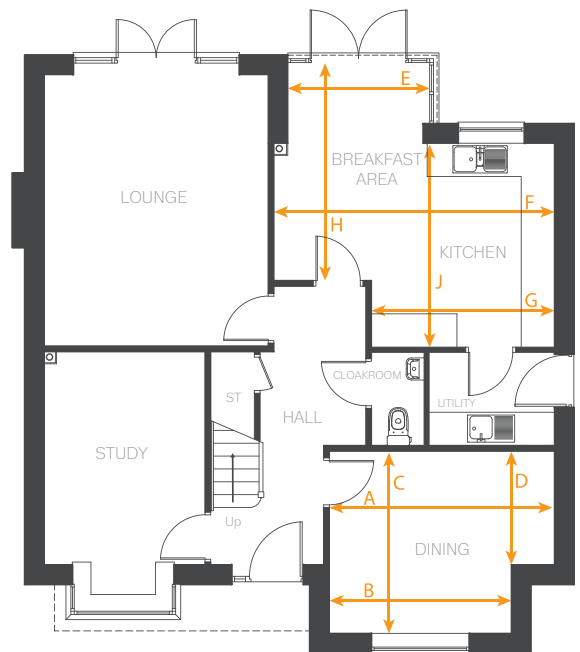
Ground Floor

LOUNGE	4844 x 3990 mm	15'10" x 13'1"
STUDY	3793(+ Bay) x 2850 mm	12'5" x 9'4"
DINING ROOM	KITCHEN/BREAKFAST AREA	
ARROW A	4010 mm - 13'1"	ARROW E 2528 mm - 8'3"
ARROW B	3233 mm - 10'7"	ARROW F 5010 mm - 16'5"
ARROW C	3237 mm - 10'7"	ARROW G 3250 mm - 10'7"
ARROW D	2000 mm - 6'6"	ARROW H 3902 mm - 12'9"
UTILITY	2230 x 1650 mm	7'3" x 5'4"
CLOAKROOM	1650 x 917 mm	5'4" x 3'0"

First Floor

BEDROOM 1	3821(max) x 3990(max) mm	12'6" x 13'1"
	3392(min) mm	11'1"
EN-SUITE	2902 x 1213 mm	9'6" x 3'11"
BEDROOM 2	ARROW K	4001 - 13'1"
	ARROW L	3233 - 10'7"
	ARROW M	4297 - 14'1"
	ARROW N	3060 - 10'0"
BEDROOM 3	3689 x 2789 mm	12'1" x 9'1"
BEDROOM 4	3515(max) x 2902(max) mm	11'6" x 9'6"
BATHROOM	2584 x 2158 mm	8'5" x 7'0"

Ground Floor



First Floor

