

# The Blyth

---

## 4-bedroom detached home

Family life is made simple in The Blyth, a traditional-looking home with a practical layout. The lounge, utility room, hall and cloakroom make up the ground floor with the combined kitchen and dining area, which has French doors opening out to a beautifully landscaped garden. Upstairs three bedrooms share a family bathroom with bathtub, while the large master bedroom benefits from its own en-suite shower and built-in wardrobe.



## Features

- Open plan kitchen and dining area looking out on landscaped rear garden
- Cloakroom, family bathroom, and master bedroom en-suite
- Separate lounge overlooking front garden
- Landscaped garden reached through French doors
- High quality Smeg kitchen appliances
- Stainless steel integrated oven, 4-ring hob and chimney hood extractor fan
- Built-in wardrobes in some bedrooms
- Single or double garage

## Room Dimensions

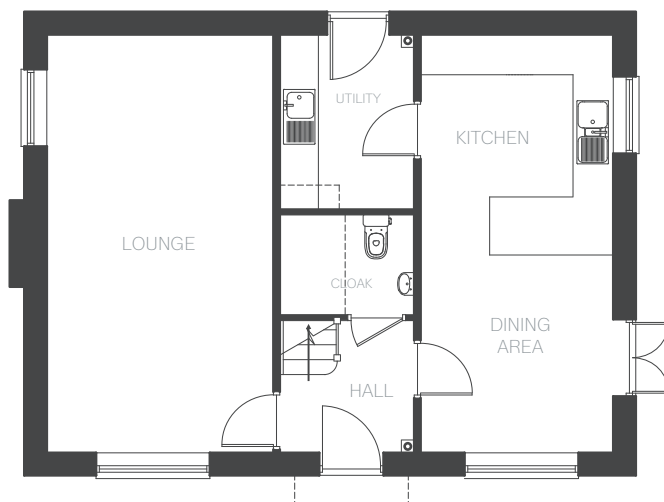
### Ground Floor

LOUNGE	6450 x 3470 mm	21'1" x 11'4"
DINING/KITCHEN	6450 x 2942 mm	21'1" x 9'7"
UTILITY	2680 x 2038 mm	8'9" x 6'8"
CLOAKROOM	1540 x 2038 mm	5'0" x 6'8"

### First Floor

BEDROOM 1	3522(max) x 3889(max) mm	12'9" x 11'6"
	3273 (min) mm	10'7"
EN-SUITE (BED 1)	2053 x 2233(max) mm	6'8" x 7'4"
	1360 (min) mm	4'5"
BEDROOM 2	3246 (min) x 2969 mm	10'7" x 9'8"
BEDROOM 3	2970 x 2458 mm	9'8" x 8'0"
BEDROOM 4	2458 x 2529 mm	8'0" x 8'3"
BATHROOM	3045 x 1465 mm	9'11" x 4'9"

Ground Floor



First Floor

