

# The Kenilworth

---

## 4-bedroom home

The Kenilworth is a beautiful 4-bedroom home with plenty of living space across 3 floors. The whole family can relax together in the spacious lounge or the contemporary open-plan kitchen and dining area, which has a wonderful view through French doors onto the garden.

Upstairs on the first floor you'll find three bedrooms sharing a modern family bathroom, any of which could easily be turned into the perfect home office space. On the second floor is where you'll find the principle bedroom, which benefits from its own en-suite shower room and walk-in wardrobe. Complementary features like a separate utility room, downstairs toilet and built-in wardrobes, mean you'll have everything you need to enjoy life in your new home.



# Features

- Open-plan kitchen and dining area with French doors opening onto turfed garden
- Spacious separate lounge
- Family bathroom with shower and bathtub on the first floor
- Principle bedroom en-suite shower room on the second floor
- Utility room and toilet on the ground floor
- High quality Smeg kitchen appliances
- Built-in wardrobes
- Driveway with two parking spaces
- HIVE smart home system

# Room Dimensions

## Ground Floor

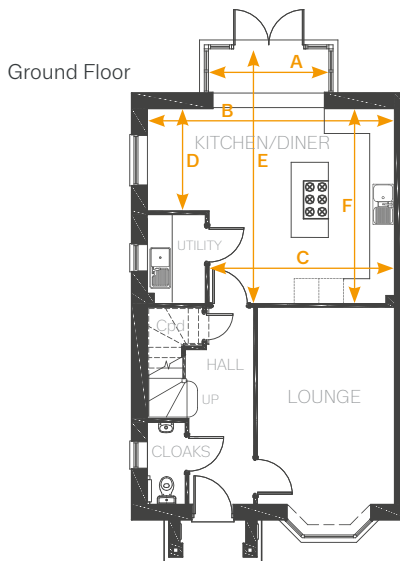
<b>LOUNGE</b>	3317mm x 4771mm	10'10" x 15'7"
<b>KITCHEN / DINER</b>		
Arrow A	2918mm	9'6"
Arrow B	5984mm	9'7"
Arrow C	4491mm	4'8"
Arrow D	2475mm	8'1"
Arrow E	6168mm	20'2"
Arrow F	4690mm	15'4"
<b>CLOAKS</b>	935mm x 1996mm	3'0" x 6'6"
<b>UTILITY</b>	1400mm x 2145mm	4'7" x 7'0"

## First Floor

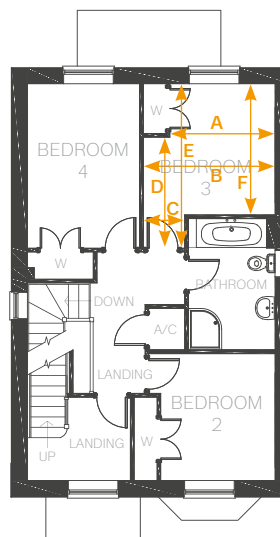
<b>BATHROOM</b>	2092mm x 3170mm	6'10" x 10'4"
<b>BEDROOM 2</b>	2761mm x 3035mm	9'0" x 9'11"
<b>WARDROBE</b>	550mm x 2011mm	1'9" x 6'7"
<b>BEDROOM 3</b>		
Arrow A	2539mm	8'3"
Arrow B	3182mm	10'5"
Arrow C	997mm	3'3"
Arrow D	2678mm	8'9"
Arrow E	3971mm	13'0"
Arrow F	3166mm	10'4"
<b>WARDROBE</b>	550mm x 1200mm	1'9" x 3'11"
<b>BEDROOM 4</b>	2761mm x 3062mm	9'0" x 10'0"
<b>WARDROBE</b>	2011mm x 550mm	6'7" x 1'9"

## Second Floor

<b>MASTER BEDROOM</b>	5984mm x 4488mm	19'7" x 14'8"
<b>WARDROBE</b>	3013mm x 2308mm	9'10" x 7'6"
<b>EN-SUITE</b>	2878mm x 2308(max) 1710(min)	9'5" x 7'6" 5'7"



## First Floor



## Second Floor

