

The Teme

3-bedroom semi-detached home

The simple layout of The Teme offers the utmost in convenient family living, with an welcoming hallway that leads straight upstairs to the first floor. On the left of the hallway is a spacious lounge, while to the right is the open-plan kitchen and dining area, which has French doors opening out onto rear garden so you can step outside on a warm summer's day or bring the fresh air inside.

All three bedrooms upstairs share a modern family bathroom complete with a bathtub, and two feature built-in wardrobes for a little extra storage space. Whether you're thinking about a guest room or the perfect home office, you'll find the bedrooms full of potential.



313221.HABM_0101



All drawings, plans, and images are for illustrative purposes only. Room measurements are approximate. Finishes and layouts may vary and, during the construction process, plans might be subject to change. For more information, speak to your sales consultant.

Features

- *Open-plan kitchen and dining area looking out onto rear garden*
- *Cloakroom and family bathroom with bathtub*
- *Separate spacious lounge*
- *Private garden reached through French doors*
- *High quality Smeg kitchen appliances*
- *Built-in wardrobes*
- *HIVE smart home system*

Room Dimensions

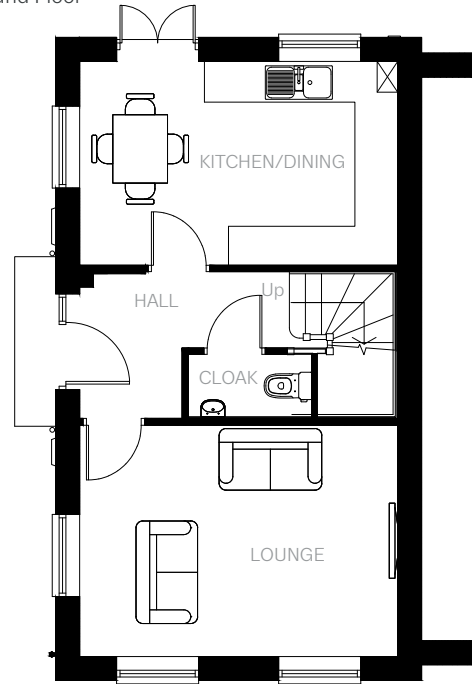
Ground Floor

LOUNGE	4635mm x 3378mm	15'2" x 11'0"
KITCHEN/DINING	4635mm x 2940mm	15'2" x 9'7"
CLOAKROOM	1804mm x 922mm	5'11" x 3'0"

First Floor

BEDROOM 1	4635mm x 2955mm	15'2" x 9'8"
BEDROOM 2	2990mm x 2122mm	9'9" x 6'11"
BEDROOM 3	2420mm x 2355mm	7'11" x 7'8"
BATHROOM	1908mm x 2213mm	6'3" x 7'3"

Ground Floor



First Floor

