

The Nene

3-bedroom home

A small porch beneath the front gable of The Nene makes for a welcoming entrance to this majestic family home. The ground floor is full of light, with both the open-plan kitchen and dining area and the lounge having windows that overlook the front and back gardens. In summer you can throw open the French doors in the lounge to let in the fresh air or step outside for that family BBQ.

Upstairs the large principle bedroom benefits from a luxury en-suite shower room and built-in wardrobe, while the remaining bedrooms share a modern family bathroom - complete with bathtub - and could easily be transformed into the perfect nursery, guest bedroom or home office space.



313221.HABM_0101

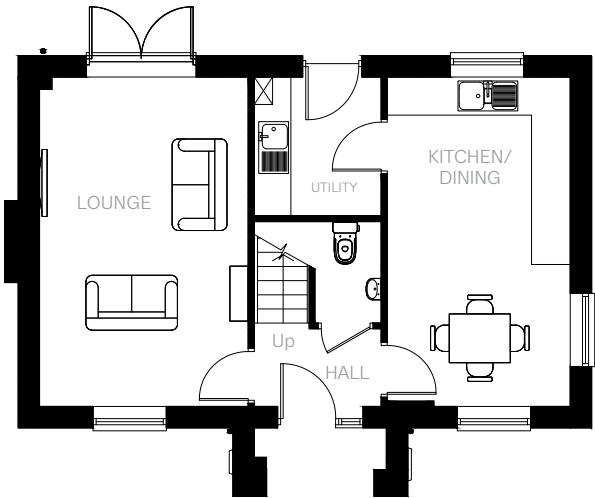


All drawings, plans, and images are for illustrative purposes only. Room measurements are approximate. Finishes and layouts may vary and, during the construction process, plans might be subject to change. For more information, speak to your sales consultant.

Ground Floor

Features

- Open-plan kitchen and dining area
- Separate lounge looking out on rear garden
- Cloakroom, family bathroom, and principle bedroom en-suite shower
- Private garden reached through French doors
- High quality Smeg kitchen appliances
- Built-in wardrobes
- Single garage
- HIVE smart home system



Room Dimensions

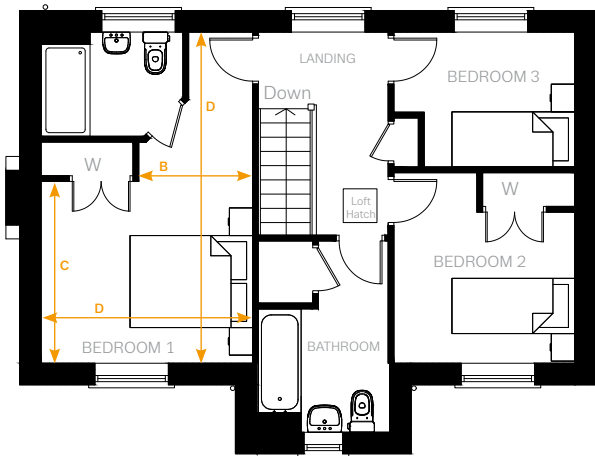
Ground Floor

LOUNGE	3341mm x 5310mm	10'11" x 17'5"
KITCHEN/DINING	2888mm x 5310mm	9'5" x 17'5"
UTILITY	2157mm x 2250mm	7'0" x 7'4"
CLOAKROOM	1189mm x 1650mm	3'10" x 5'4"

First Floor

BEDROOM 1		
Arrow A	3397mm	11'1"
Arrow B	1706mm	5'7"
Arrow C	2874mm	9'5"
Arrow D	5310mm	17'5"
EN-SUITE	2288mm x 1700mm	7'6" x 5'6"
BEDROOM 2	2945mm x 2412mm	9'7" x 7'10"
BEDROOM 3	2945mm x 2162mm	9'7" x 7'1"
BATHROOM	2155mm x 1996mm	7'0" x 6'6"

First Floor



All drawings, plans, and images are for illustrative purposes only. Room measurements are approximate. Finishes and layouts may vary and, during the construction process, plans might be subject to change. For more information, speak to your sales consultant.