

The Dee

3-bedroom home

The Dee is a bright and spacious home for small families. A covered porch and hallway welcome you into the pretty 3-bedroom home, where you have access to a large separate lounge and an open-plan kitchen and dining area, which benefits from having French doors that open out onto the garden. A separate utility room provides some extra storage and a downstairs cloakroom completes the ground floor.

Upstairs you'll find two bedrooms, either of which would make a great home office space. They share a modern family bathroom with a bathtub and separate shower, while a large and luxurious principle bedroom with en-suite shower room offers the perfect escape.



313221.HABM_0101



All drawings, plans, and images are for illustrative purposes only. Room measurements are approximate. Finishes and layouts may vary and, during the construction process, plans might be subject to change. For more information, speak to your sales consultant.

Features

- Open-plan kitchen and dining area looking out on rear garden
- Cloakroom, family bathroom, and principle bedroom en-suite shower room
- Spacious separate lounge
- Separate utility room
- High quality Smeg kitchen appliances
- Built-in wardrobes
- Private garden reached through French doors
- HIVE smart home system
- Garage

Room Dimensions

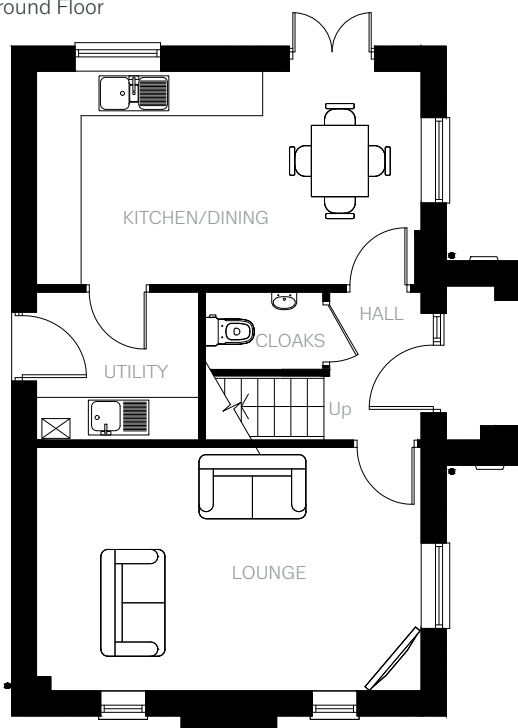
Ground Floor

LOUNGE	3338mm x 5310mm	10'11" x 17'5"
KITCHEN/DINING	2890mm x 5310mm	9'5" x 17'5"
UTILITY	2158mm x 2250mm	7'0" x 7'4"
CLOAKROOM	1190mm x 1650mm	3'10" x 5'4"

First Floor

BEDROOM 1	3385mm x 3517mm	11'1" x 11'6"
EN-SUITE	2270mm x 1697mm	7'5" x 5'6"
BEDROOM 2	2945mm x 3055mm	9'7" x 10'0"
BEDROOM 3	2945mm x 2162mm	9'7" x 7'1"
BATHROOM	2160mm x 1998mm (min)	7'1" x 6'6"

Ground Floor



First Floor

