

# The Blyth

---

## 4-bedroom detached home

Family life is made simple in The Blyth, a traditional-looking home with contemporary features and a practical layout. The lounge, utility room, hall and cloakroom make up the ground floor with the combined kitchen and dining area, which has French doors opening out to a private garden when you want to enjoy some outside space.

Upstairs three bedrooms share a family bathroom with bathtub, while the large principle bedroom benefits from its own en-suite shower and built-in wardrobe. If you're stuck for ideas about what to do with the fourth bedroom, it can be easily transformed into the perfect home office space.



313221.HABM\_0101



All drawings, plans, and images are for illustrative purposes only. Room measurements are approximate. Finishes and layouts may vary and, during the construction process, plans might be subject to change. For more information, speak to your sales consultant.

## Features

- Open-plan kitchen and dining area looking out onto rear garden
- Cloakroom, family bathroom, and principle bedroom en-suite
- Separate lounge overlooking front garden
- Private turfed garden reached through French doors
- High quality Smeg kitchen appliances
- Built-in wardrobes
- HIVE smart home system
- Single garage

## Room Dimensions

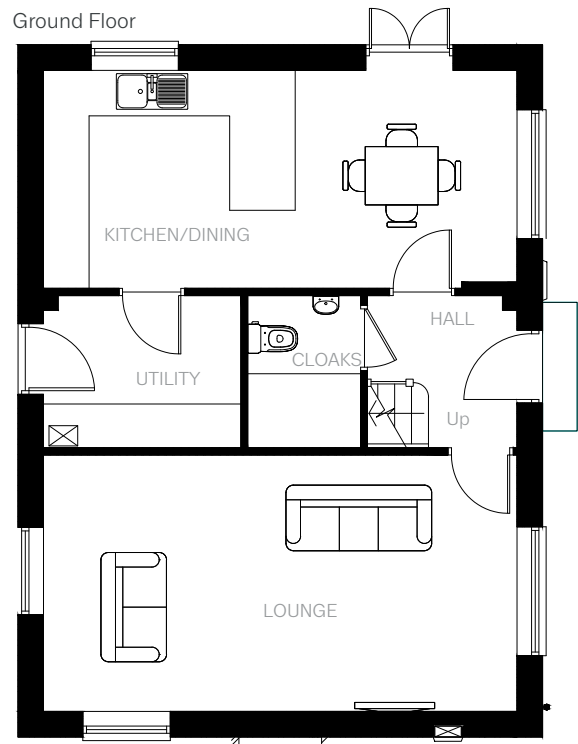
### Ground Floor

|                |                 |               |
|----------------|-----------------|---------------|
| LOUNGE         | 3470mm x 6435mm | 11'4" x 21'1" |
| KITCHEN/DINING | 2942mm x 6435mm | 9'7" x 21'1"  |
| UTILITY        | 2136mm x 2623mm | 7'0" x 8'7"   |
| CLOAKROOM      | 2086mm x 1510mm | 6'10" x 4'11" |

### First Floor

|           |                 |               |
|-----------|-----------------|---------------|
| BEDROOM 1 | 3517mm x 3879mm | 11'6" x 12'8" |
| EN-SUITE  | 2082mm x 2229mm | 6'9" x 7'3"   |
| BEDROOM 2 | 2989mm x 3236mm | 9'9" x 10'7"  |
| BEDROOM 3 | 2989mm x 2463mm | 9'9" x 8'0"   |
| BEDROOM 4 | 2519mm x 2463mm | 8'3" x 8'0"   |
| BATHROOM  | 3080mm x 1446mm | 10'1" x 4'8"  |

Ground Floor



First Floor

