

The Kingsbury

4-bedroom detached home

The Kingsbury is great for busy families, with lots of living space on the ground floor. At the front of the house you'll find a separate study and dining room, which provide plenty of options whether you want to create an additional family room or turn one area into the perfect home office space you've always wanted.

At the back of the house a separate lounge and open-plan kitchen with breakfast area both feature French doors allowing you to step out onto the rear garden. In the hall at the centre of the house are the stairs up to the first floor, which has a family bathroom and four bedrooms, including a principle bedroom with an en-suite shower room and two built-in wardrobes.



Features

- *Open-plan kitchen with breakfast area looking out on rear garden*
- *Spacious 15ft lounge with French doors*
- *Separate dining room and study*
- *Cloakroom, family bathroom with bathtub, and principle bedroom en-suite shower*
- *Private garden reached through French doors*
- *High quality Smeg kitchen appliances*
- *Built-in wardrobes in some bedrooms*
- *HIVE smart home system*
- *Double garage*

Room dimensions

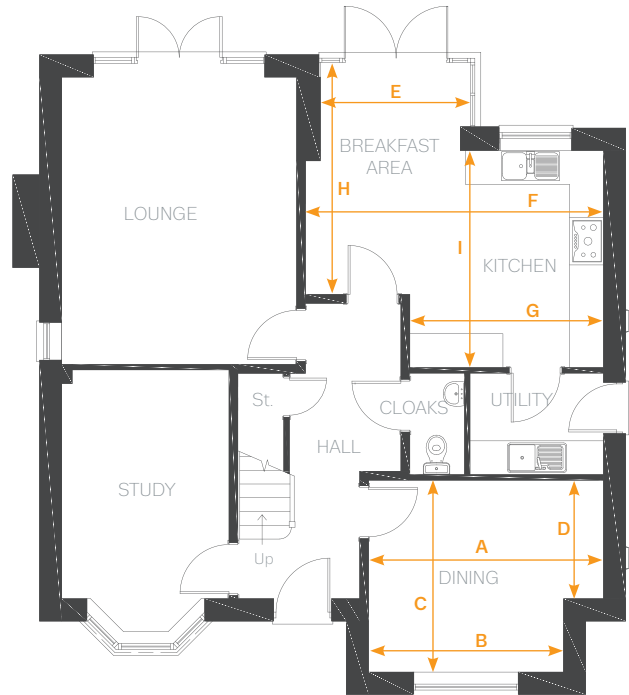
Ground Floor

LOUNGE	3960mm x 4845mm	12'11" x 15'10"
STUDY	2820mm x 3860mm	9'3" x 12'7"
DINING ROOM		KITCHEN/BREAKFAST
ARROW A	3960mm 12'11"	ARROW E 2535mm 8'3"
ARROW B	3173mm 10'4"	ARROW F 5025mm 16'5"
ARROW C	3238mm 10'7"	ARROW G 3265mm 10'8"
ARROW D	2000mm 6'6"	ARROW H 3914mm 12'10"
		ARROW I 3662mm 12'0"
UTILITY	2250mm x 1712mm	7'4" x 5'7"
CLOAKROOM	922mm x 1712mm	3'0" x 5'7"

First Floor

MASTER BEDROOM	3960mm x 3812mm	12'11" x 12'6"
EN-SUITE	2877mm x 1223mm	9'5" x 4'0"
BEDROOM 2		
ARROW A	3960mm 12'11"	
ARROW B	3173mm 10'4"	
ARROW C	4328mm 14'2"	
ARROW D	3090mm 10'1"	
BEDROOM 3	2748mm x 3679mm	9'0" x 12'0"
BEDROOM 4	2877mm x 3545mm	9'5" x 11'7"
BATHROOM	2241mm x 2574mm	7'4" x 8'5"

Ground Floor



First Floor

