

The Thurlaston

4-bedroom detached home

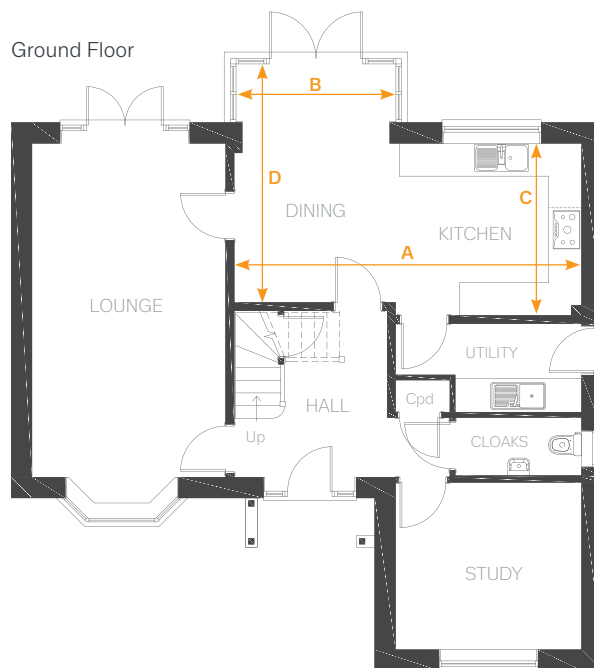
The Thurlaston is a traditional-looking home with ample off-street parking and lots of space for the family to spend time together inside and out. As you walk through the front door and enter the hallway, you'll access a large lounge and open-plan kitchen and dining areas, where you can throw open the French doors and step out onto a private garden.

A utility room provides some extra storage space while a downstairs study is the perfect retreat when you're working from home. Upstairs on the first floor you'll find a family bathroom and four bedrooms, including a principle bedroom with an en-suite shower.



Features

- Open-plan kitchen and dining area with French doors
- Separate lounge opening out onto garden
- Additional front-facing study for a home office or extra family room
- Family bathroom with bathtub, and principle bedroom en-suite shower
- Built in wardrobes in three bedrooms
- Private garden
- Utility room and toilet on ground floor
- High quality Smeg kitchen appliances
- HIVE smart home system
- Double garage



Room dimensions

Ground Floor

LOUNGE	3541mm x 6098mm	11'7" x 20'0"
KITCHEN / DINING		
ARROW A	6345mm	20'9"
ARROW B	2919mm	9'6"
ARROW C	3144mm	10'3"
ARROW D	4355mm	14'3"
STUDY	3398mm x 3057mm	11'1" x 10'0"
UTILITY	3398mm x 1621mm	11'1" x 5'3"
CLOAKS	2310mm x 1060mm	7'6" x 3'5"

First Floor

BEDROOM 1	3398mm x 4387mm	11'1" x 14'4"
EN-SUITE	1986mm x 1700mm	6'6" x 5'6"
BEDROOM 2	3597mm x 2963mm	11'9" x 9'8"
BEDROOM 3	2975mm x 3398mm	9'9" x 11'1"
BEDROOM 4	2871mm x 3042mm	9'5" x 9'11"
BATHROOM	3562mm x 1968mm	11'8" x 6'5"

First Floor

