

# The Stonethwaite

---

## 5-bedroom home

The Stonethwaite is a stunning 5-bedroom home spread across three storeys. It's impressive open-plan kitchen and dining area comes equipped with a convenient kitchen island and two sets of French doors that overlook the private garden, making it a beautiful and bright space for the family to enjoy together. The spacious lounge, home study, utility room and cloakroom provide your family with bundles of space and storage.

On the first floor, you'll find 3 bedrooms that share a modern family bathroom, complete with bathtub and a large double room with built-in wardrobes and an en-suite. Head upstairs to the top floor for the luxurious principal bedroom, with its own shower room, built-in wardrobes and extra storage space.



# Features

- Open-plan kitchen and dining area with two sets of French doors opening onto a private garden
- Spacious separate lounge
- Additional dining/study room
- Utility room and toilet on ground floor
- Family bathroom with shower and bathtub on the first floor
- Large Bedroom with en-suite on first floor
- Private floor for principal bedroom with shower room
- Built-in wardrobes
- High quality Smeg kitchen appliances
- HIVE smart home system
- Garage

# Room dimensions

## Ground Floor

Kitchen/Diner	Arrow A	3586mm	11'9"
	Arrow B	2798mm	9'2"
	Arrow C	3478mm	11'4"
	Arrow D	3628mm	11'10"
	Arrow E	8353mm	27'4"
	Arrow F	3403mm	11'1"
Lounge	3403mm x 5174mm	11'1" x 16'11"	
Study	2523mm x 2882mm	8'3" x 9'5"	
Utility	2523mm x 2092mm	8'3" x 6'10"	
Cloaks	850mm x 1792mm	2'9" x 5'10"	

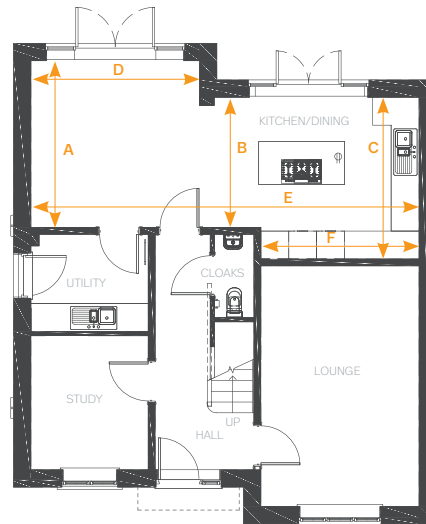
## First Floor

Bedroom 1	3628mm x 2943mm	11'10" x 9'7"	
	Wardrobe	2365mm x 550mm	7'9" x 1'9"
	En-suite	1332mm x 2801mm	4'4" x 9'2"
Bedroom 2	3403mm x 3913mm	11'1" x 12'10"	
	Wardrobe	2367mm x 550mm	7'x9" x 1'9"
Bedroom 3	3209mm x 3478mm	10'6" x 11'14"	
	Wardrobe	2367mm x 525mm	7'x9" x 1'8"
Bedroom 4	2557mm x 3499mm	8'4" x 8'2"	
Bathroom	2555mm x 2475mm	8'4" x 8'1"	

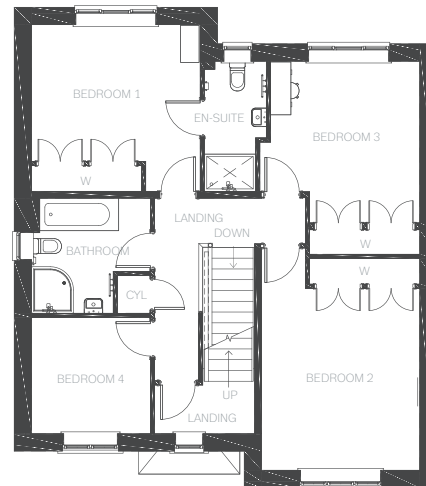
## Second Floor

Principal Bedroom	Arrow A	4761mm	15'7"
	Arrow B	5647mm	18'6"
	Arrow C	3460mm	11'4"
	Arrow D	4667mm	15'3"
	EN-SUITE	1498mm x 1498mm	4'10" x 4'10"
Wardrobe	550mm x 3171mm	1'9" x 10'4"	
EN-suite	1498mm x 2492mm	4'10" x 8'2"	

Ground Floor



First Floor



Second Floor

