

# The Henmore

---

## 3-bedroom home

The Henmore is an attractive 3-bedroom, 3-storey home that's full of charming features. On the ground floor you'll find a spacious lounge that leads into a light and bright open-plan kitchen and dining area, with French doors overlooking the rear garden. Up the stairs to the first floor is where you'll find a modern family bathroom and two of the bedrooms, one which benefits from an en-suite shower room.

On the second floor lies the main bedroom which also enjoys its own en-suite for a little extra space and luxury. Other considerate features like built-in wardrobes, a ground floor cloakroom and modern appliances make this an excellent choice for couples and small families alike.



# Features

- Open plan kitchen and dining area with French doors leading to rear garden
- Spacious separate lounge
- Principle bedroom with en-suite
- Family bathroom and en-suite shower room
- Three bedrooms with built-in wardrobes
- High quality Smeg kitchen appliances
- Private garden

## Room dimensions

### First Floor

Lounge	3932(max) x 5125mm	12'10" x 16'9"
Kitchen/Diner	Arrow A 2918mm	9'6"
	Arrow B 4930mm	16'2"
	Arrow C 3932mm	12'10"
	Arrow D 2643mm	8'8"
	Arrow E 5295mm	17'4"
	Arrow F 3847mm	12'7"
Cloaks	905mm x 1907mm	2'11" x 6'3"

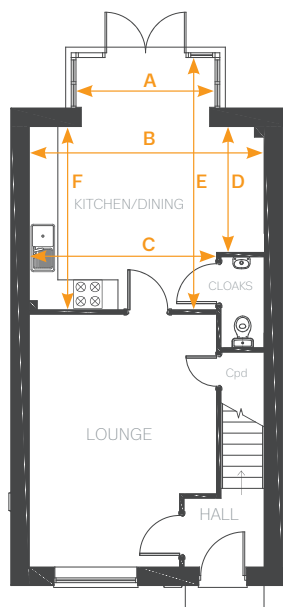
### First Floor

Bathroom	1950mm x 3305mm	6'4" x 10'10"
Bedroom 2	2887mm x 3158mm	9'5" x 10'4"
Wardrobe	1896mm x 550mm	6'2" x 1'9"
En-suite	1896mm x 1506mm	6'2" x 4'11"
Bedroom 3	2887mm x 3178mm	9'5" x 10'5"
Wardrobe	1896mm x 507mm	6'2" x 1'7"

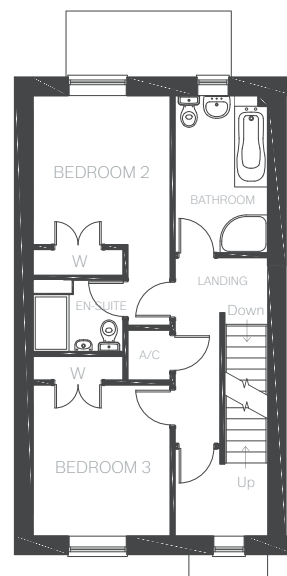
### Second Floor

Bedroom 1	4929mm x 4630mm	16'2" x 15'2"
Wardrobe 2	543mm x 1851mm	8'4" x 6'0"
En-suite	2093mm x 1851mm	6'10" x 6'0"

### Ground Floor



### First Floor



### Second Floor

