

The Tweed

2-bedroom semi-detached home

The Tweed is ideal for young professionals and small families. Downstairs, the entrance hall opens into the cloakroom and a combined lounge and dining area, which is attached to a modern kitchen. Up the stairs are a family bathroom with bathtub and the two bedrooms, one with both a built-in wardrobe and en-suite bathroom.



Features

- Open plan lounge and dining area looking out onto rear garden
- Kitchen looking out on rear garden
- Cloakroom, family bathroom, and master en-suite shower
- Landscaped garden reached through French doors
- High quality Smeg kitchen appliances
- Stainless steel integrated single oven, hob and extractor fan
- Built-in wardrobes in master bedroom

Room Dimensions

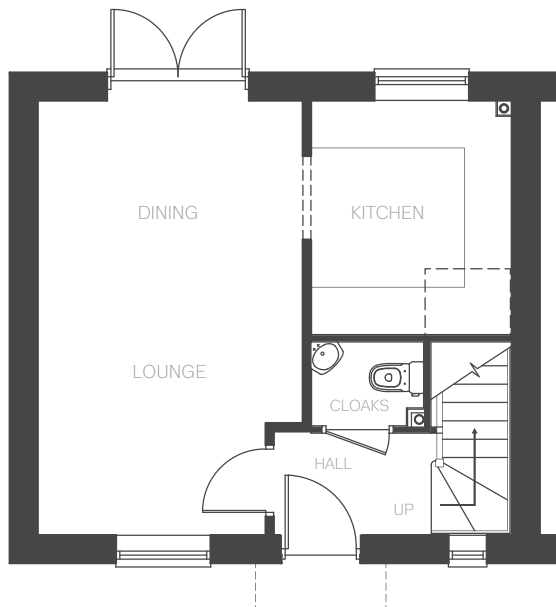
Ground Floor

LOUNGE/DINING	5450 x 3307(max) mm 2836(min) mm	17'10" x 10'10" 9'3"
KITCHEN	2932 x 2493 mm	9'7" x 8'2"
CLOAKROOM	1400 x 1025 mm	4'7" x 3'4"

First Floor

BEDROOM 1	3526(max) x 2698(max) mm 2836(min) mm	11'6" x 8'10" 9'3"
EN-SUITE	2248(max) x 1224(max) mm	7'4" x 4'0"
BEDROOM 2	3877(min) x 2649(max) mm 2006(min) mm	12'8" x 8'8" 6'6"
BATHROOM	2006 x 1970 mm	6'6" x 6'5"

Ground Floor



First Floor

