

# The Beck

---

## 4-bedroom detached home

With a large bay window in the kitchen and French doors looking out on the garden from both the lounge and dining room, The Beck is a truly fresh and open space. A generously sized porch, entrance hall, and cloakroom form the ground floor with the kitchen, lounge, and dining room, while up the stairs are the four bedrooms, including a master bedroom with built-in wardrobe and en-suite bathroom.



## Features

- Cloakroom, family bathroom, and master bedroom en-suite
- Separate lounge and dining room, both with French doors onto landscaped garden
- High quality Smeg kitchen appliances
- Stainless steel integrated oven, 4-ring hob and chimney hood extractor fan
- Built-in wardrobes in two bedrooms
- Single garage

## Room Dimensions

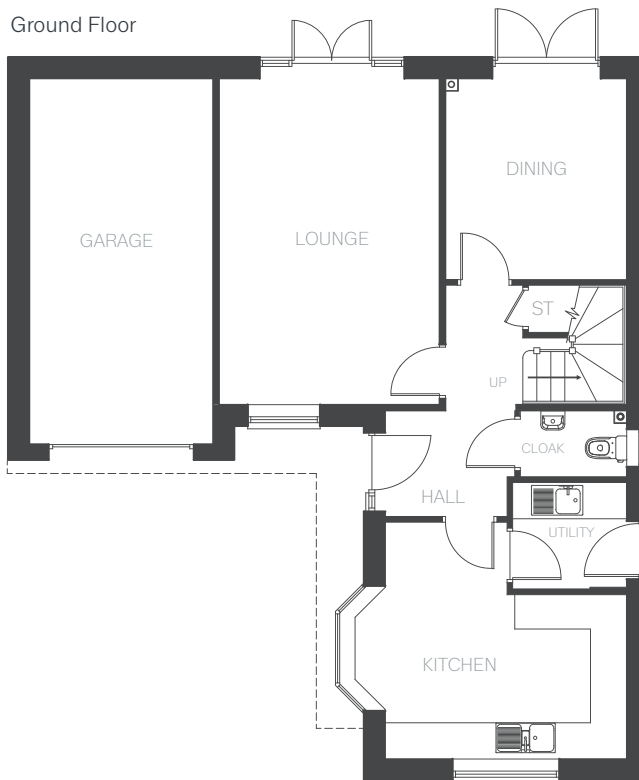
### Ground Floor

LOUNGE	5350 x 3560 mm	17'6" x 11'8"
KITCHEN	3950 + bay x 2693 mm	12'11" x 8'9"
DINING	3300 x 2950 mm	10'9" x 9'8"
UTILITY	1857 x 1754 mm	6'1" x 5'9"
CLOAKROOM	1732 x 1066 mm	5'8" x 3'5"

### First Floor

BEDROOM 1	3950 x 3797 mm	12'11" x 12'5"
EN-SUITE	2162 x 1819 mm	7'1" x 5'11"
BEDROOM 2	4048 x 3082 mm	13'3" x 10'1"
BEDROOM 3	5024 x 2165 mm	16'5" x 7'1"
BEDROOM 4	3300 x 2700 mm	10'9" x 8'10"
BATHROOM	2886 x 2058 mm	9'5" x 6'9"

Ground Floor



First Floor

