

The Lambourn

5-bedroom detached home

An impressive kitchen, breakfast and family area is the focal point of The Lambourn, while the equally spacious separate lounge and additional dining room offer even more room for your family to spread out. The five bedrooms are arranged across the first and second floors, sharing a family bathroom and a shower room. In the master bedroom, you'll find a little privacy; it's fitted with its own en-suite shower room and two built-in wardrobes.



Features

- Open plan kitchen, breakfast, and family area with bay windows
- Cloakroom, family bathroom, shower room, and master en-suite
- Spacious separate lounge and additional dining room
- High quality Smeg kitchen appliances
- Stainless steel integrated oven, 5-ring hob and chimney hood extractor fan
- Landscaped garden reached through French doors
- Built-in wardrobes in some bedrooms
- Double garage

Room Dimensions

Ground Floor

LOUNGE	4990 x 3550 mm	16'4" x 11'7"
KITCHEN/FAMILY/ BREAKFAST	9550 x 3050 mm (+ bay)	31'3" x 10'0"
DINING	3550 x 3167 mm	11'7" x 10'4"
UTILITY	2472 x 1720 mm	8'1" x 5'7"
CLOAKROOM	1720 x 975 mm	5'7" x 3'2"

First Floor

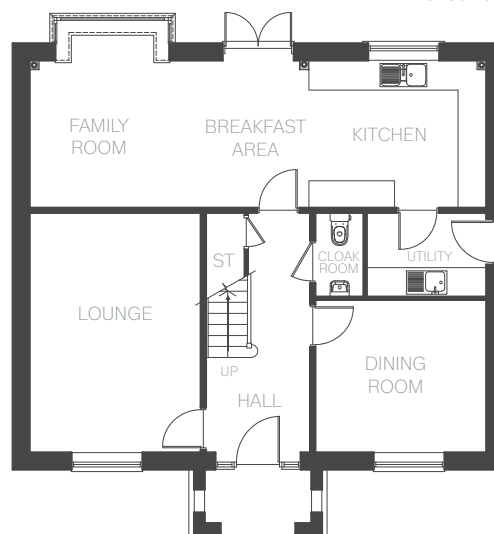
BEDROOM 1	6217 x 3550 mm (max) 2952mm(min)	20'4" x 11'7" 9'8"
EN-SUITE	2693 x 1870 mm	8'10" x 6'1"
BEDROOM 2	3550 x 3433 mm	11'7" x 11'3"
BEDROOM 3	3550 x 3368 mm	11'7" x 11'0"
BATHROOM	3054(max) x 2128(max) mm	9'8" x 6'11"

Second Floor

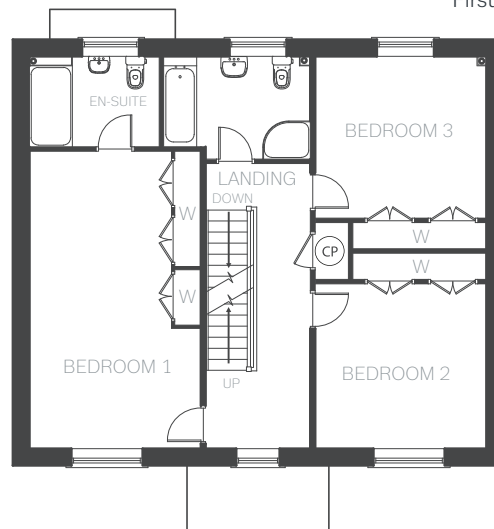
BEDROOM 4	5210 x 3550 mm	17'1" x 11'7"
BEDROOM 5	4753 x 3190 mm	15'7" x 10'5"
SHOWER	2885 x 1917 mm	9'5" x 6'3"



Ground Floor



First Floor



Second Floor

